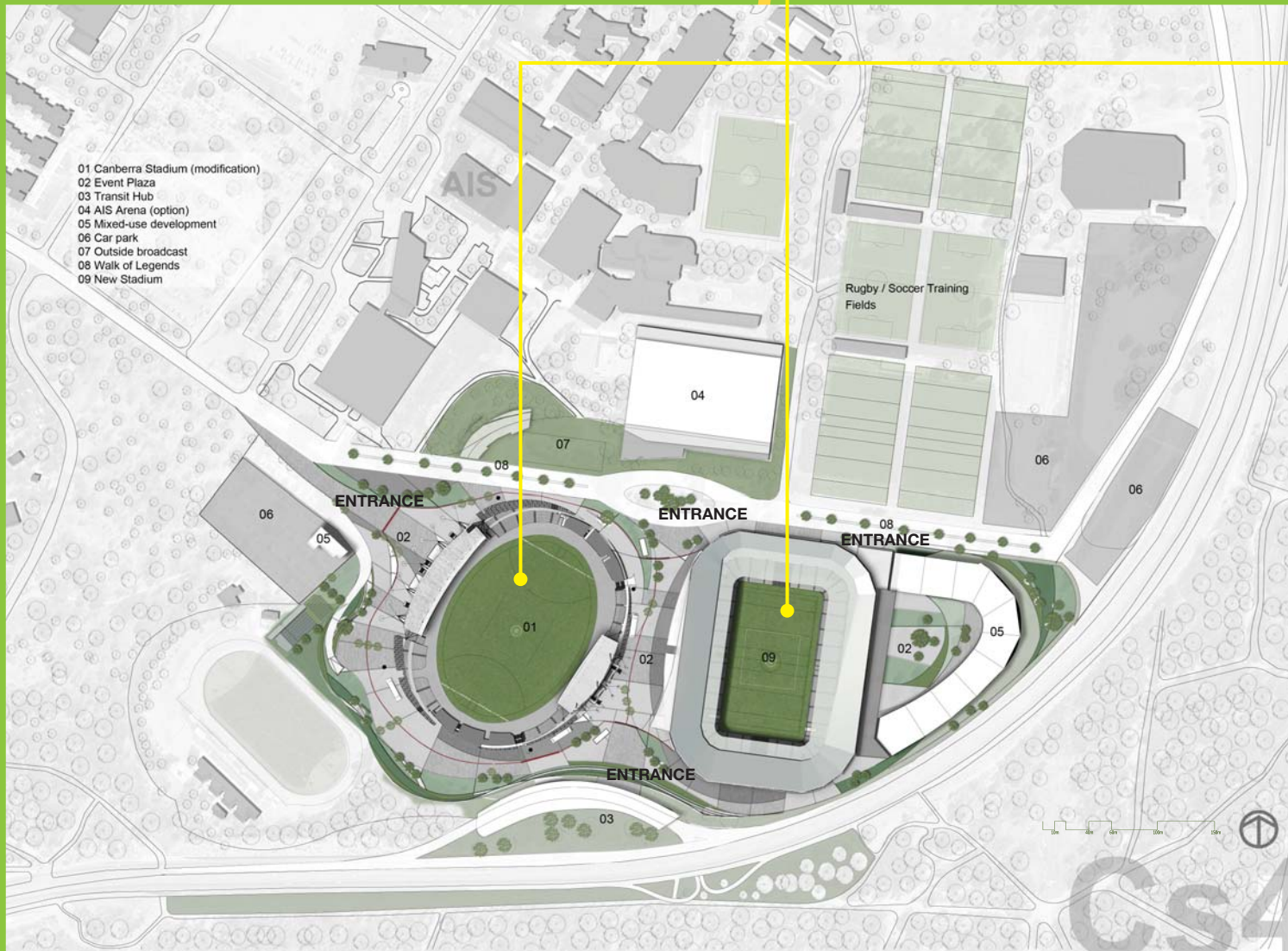


CS4

THE SPORTS CAPITAL The creation of a truly unique elite sporting and entertainment precinct

This option includes:

- EFFICIENT new stadium
- FLEXIBILITY for future extension to just various major events
- MASTERPLAN for growth of precinct over next 25 years
- ENHANCES and promotes the elite sporting history of the precinct
- NEW state of the art playing field
- CO-LOCATION of major sports
- RETURNS Canberra Stadium to host major AFL and cricket games
- PROVIDES night lighting for cricket and AFL
- POTENTIAL for mixed use development
- GREATER sense of "place" and entertainment
- GAME and spectator facilities upgraded
- NEW stadium with 26,000 permanent seats- 40,000 temporary seat capacity
- BETTER proximity to the action and atmosphere
- IMPROVED access to the precinct
- BETTER public transport connections to the city
- NEW Transport Hub
- NEW read access from the north
- STRONG address to precinct
- MAIN address to new boulevard
- LARGE public spaces
- ENHANCED external plaza area, entrances and signage
- AVOIDS impacts of expansion of manuka oval on surrounding areas
- INCLUDES the latest technologies in environmentally friendly design and construction
- LONG term solution



- Provide a new dedicated rectangular stadium with a permanent capacity of 26,500 with the flexibility to increase to a maximum capacity of 40,000 patrons
- Revises the existing Canberra Stadium to its pre-1985 format., by raising the level of the field of play to the same level as the existing lateral aisle. The existing facilities are retained, with the addition of new routes to the relocated field of play from the team change facilities and more seats strategically located to achieve the AFL requirement of 19,000 permanent capacity
- Convert Canberra Stadium to accommodate AFL and cricket
- Upgrade plazas to provide for a greater level of patron interaction and sense of "place"
- Provide distinctive entrances and plazas
- New rectangular stadium provides roof cover to 80% of patrons
- Locates a transport hub, adjacent to the GDE to maximise public transport access, segregate buses from cars
- Create corporate facilities
- Create an identity and a sense of "place", including development of the idea of an entertainment precinct to attract patrons to arrive early and leave late
- Transport oriented development to the East and West of the stadium precinct will attract mixed uses and increase precinct activity year round
- Includes Environmental Sustainable Design initiatives, such as water and solar harvesting on site
- Provides park and ride facility

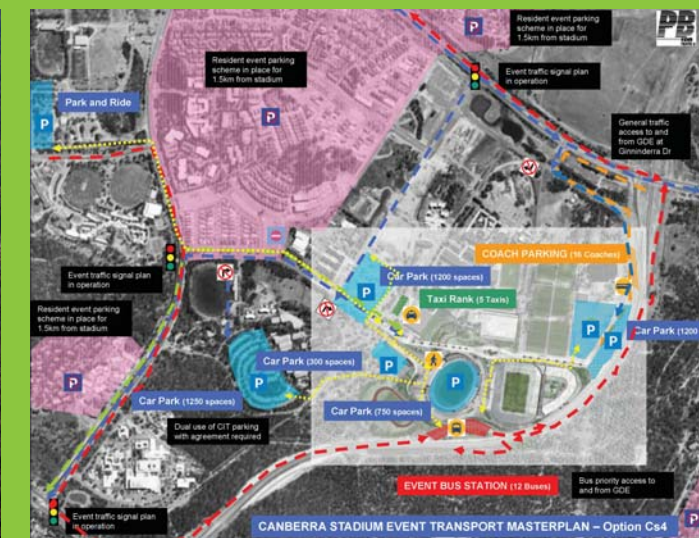
Indicative construction cost \$300-350 million



INDICATIVE IMAGE ONLY



INDICATIVE IMAGE ONLY



INDICATIVE EVENT TRANSPORT MASTER PLAN



territory venues & events



POPULOUS™
Created by HOK SPORT VENUE EVENT

CS4 CANBERRA STADIUM | M03 MANUKA OVAL